

Xelf (Kiosk III)



Connect With XPOS, XPPC Series.
Available in Windows and Android OS.

01/ Self Service, Optimize queuing and improve efficiency



Scan



Print



Payment

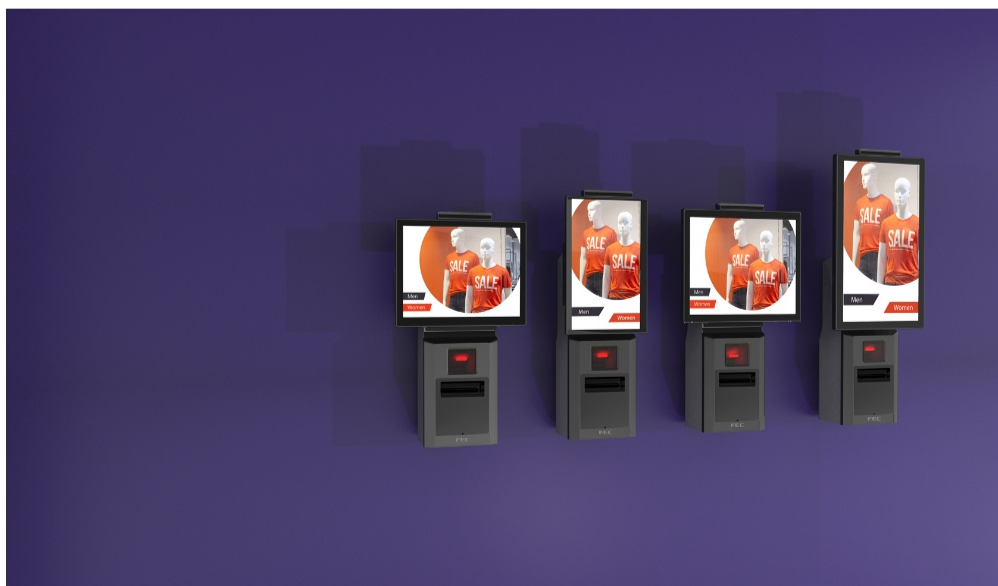


Counter



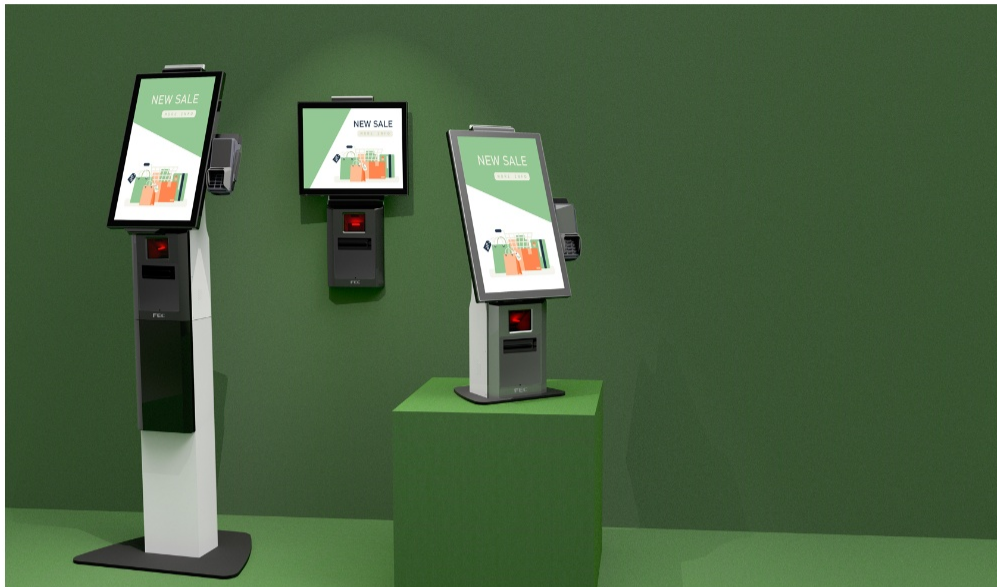
02/ 15 | 15.6 | 17 | 22

Four Sizes & resolutions
to fulfill different needs



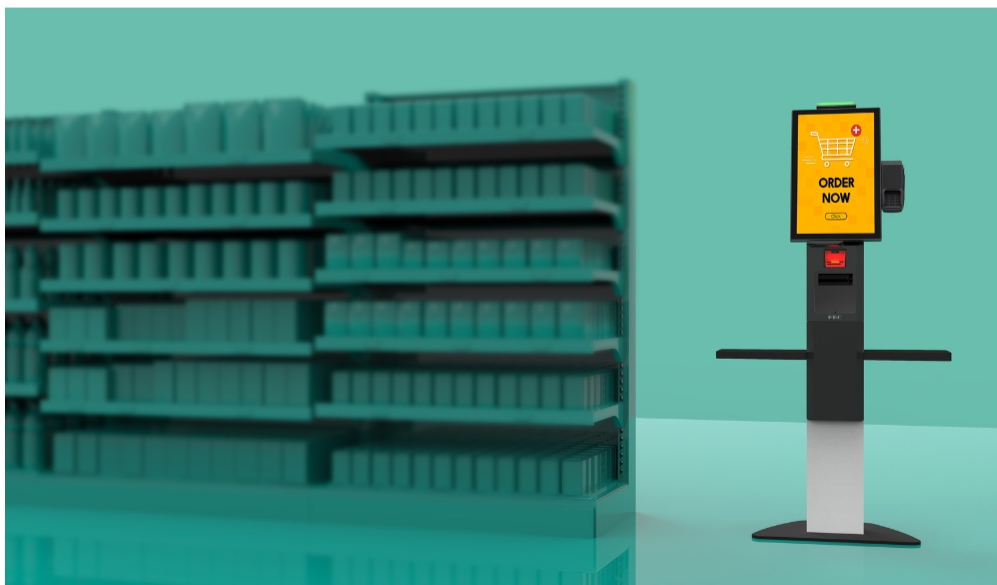
03/ Xelf

- Classic Standalone
- Elegant Desktop
- Simple Wall-mount



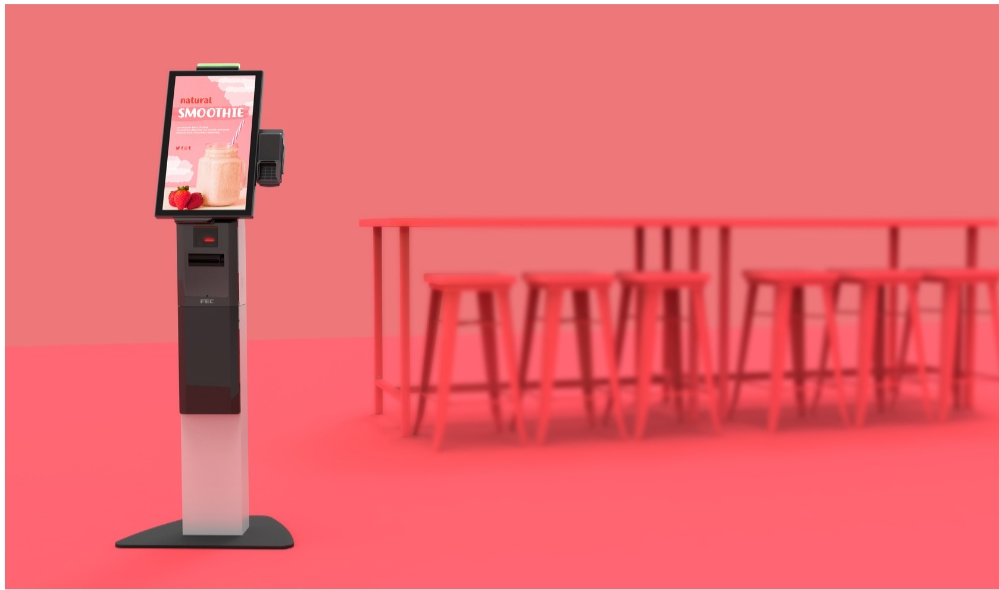
04/ Self-Checkout

Fast, efficient checkout to improve your customer's experience and your bottom line.



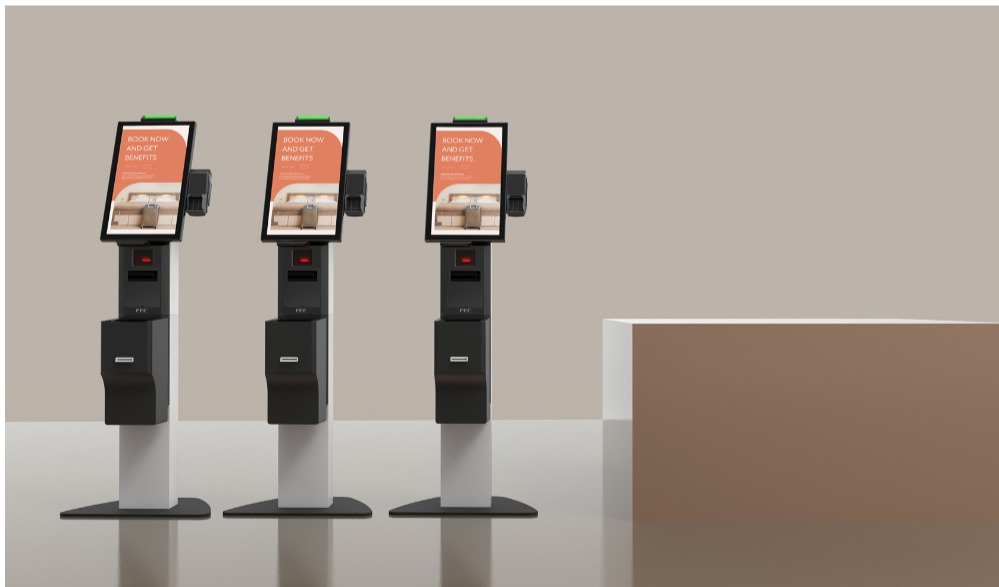
05/ Self-Ordering

Expand your in-store aisles or your menu boards to expand your sales.

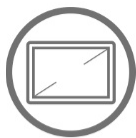


06/ Expandable Service

Device flexibility, expand your kiosk capabilities through additional devices.



Specifications



Display

- 15" / 15.6" / 17" / 22"



OS

- Windows
- Android



Mounting

- Desktop
- Wallmount
- Standalone



Certification

- FCC / CE Class B



Appearance

- Aluminum Die-Casting + Plastic
- Galaxy Grey



Temperature

- Operation: 0 °C ~ 40 °C (32 °F ~ 104 °F)
- Storage: -20 °C ~ 60 °C (-4 °F ~ 130 °F)



Dimensions (W x H x D)

- Product: 300 x 780 x 270 mm (22" Desktop version)
- Product: 570 x 1545 x 390 mm (22" Standalone version)



Optional

- Honeywell CF3680
- Green&Red Led Status LED indicator
- 2MP Camera
- Additional 5W USB Speaker x 2
- Support printer: FEC TP-100, Epson M30, Seiko D10