



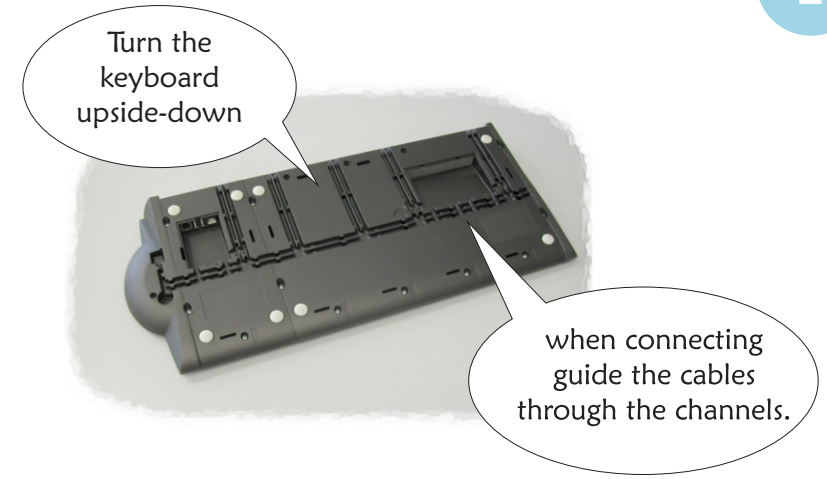
Getting started

With

FREE



1



FREE programmable keyboards can have either **PS/2** or **USB** connection to the PC.

Each option demands a different keyboard controller with a different connection plate shown on next pictures.

Tipro keyboards Slovenia
tel.:+386 (0)1/78 88 200
tipro@tipro.si

Tipro keyboards Croatia
tel.:+385 (0)1/619 81 54
tipro@tipro.hr

Tipro keyboards Germany
tel.:+49 (0)89/90 01 91 33
info@tipro.de

Tipro keyboards Italy
tel.:+39 040/291 60 96
tipro@tipro.it

www.tipro.net

mp 40297/3.5

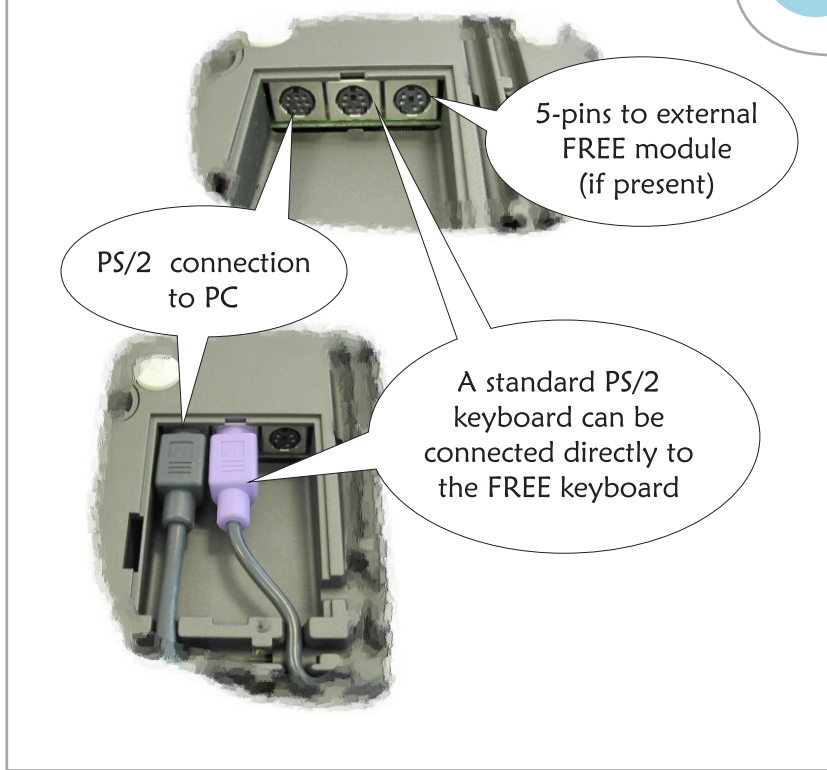
USB version

2



PS/2 version

3



4



WARNING:

This is a Class A product. In a domestic environment this product may cause radio interference in which case the user may be required to take adequate measures.

FOLLOWING STEPS ARE NOT NEEDED
IF THE KEYBOARD IS ALREADY PROGRAMMED!

1

Insert
Tipro CD

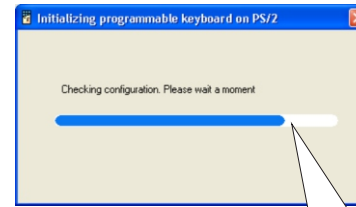
follow the on-screen
directions and finish
the installation

install ChangeMe (USB)

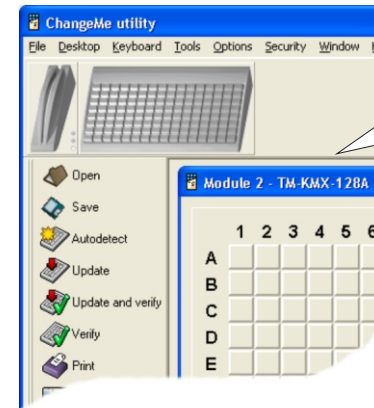


2

run
ChangeMe



your FREE
configuration will be
automatically detected

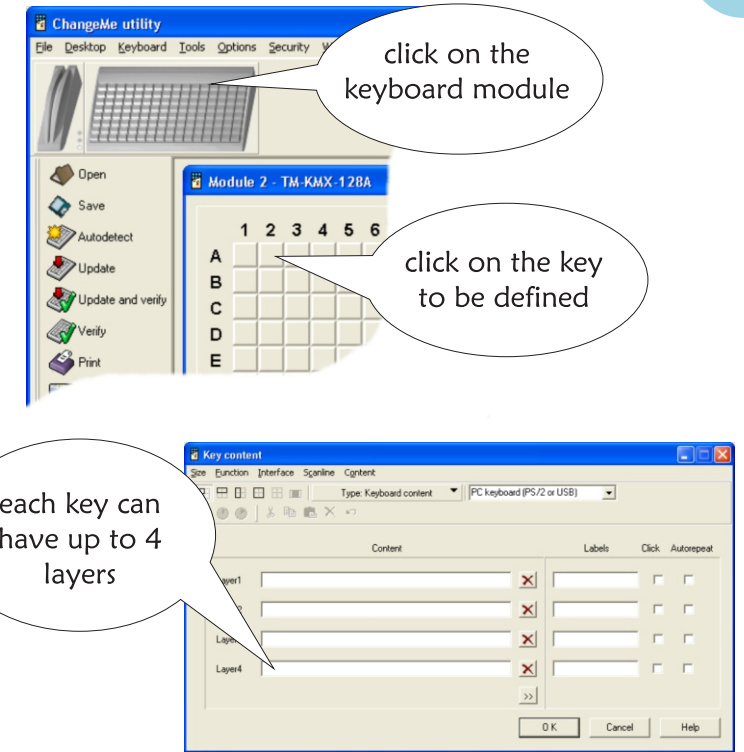


3

click on the
keyboard module

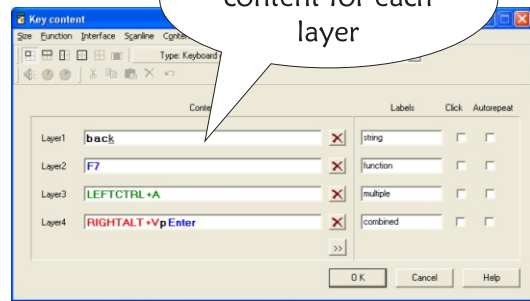
click on the key
to be defined

each key can
have up to 4
layers

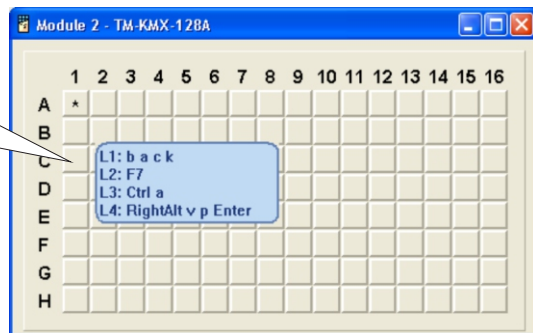


4

enter the
content for each
layer



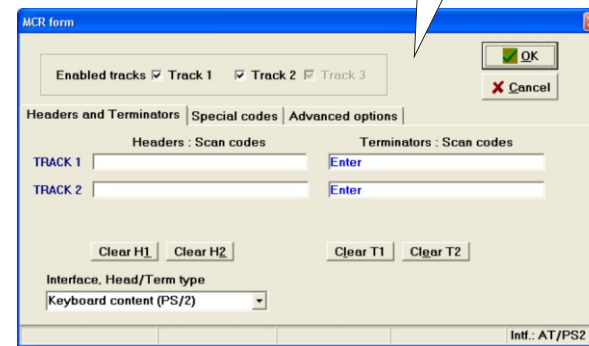
repeat
for all
keys



5

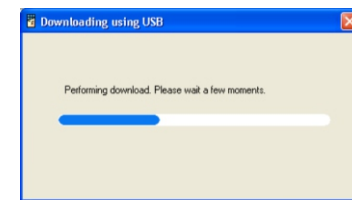
click on the card
reader module

enter the contents
for header and
terminator



6

when finished,
download to
keyboard



and try your
new
configuration!

