



MioWORK TM

A500 SERIES

5" Rugged Handheld device

This MioWORK A500 Series is the perfect solution for a wide range of commercial applications. Similar size to a smartphone, the 5" Capacitive multi-touch panel provides comfort to the user without sacrificing the ruggedness, endurance and durability. It has various use applications including Logistics & Transportation, Field service, retail customer service, inventory management and pharmacy management.

The device's rugged design is suitable for indoor and outdoor application with a sunlight readable display, glove support, 1.2 metre drop resistant and IP67 water resistant. Features of Android 6.0 and supporting LTE and voice* complete the smartphone criteria. The big battery capacity and hot-swappable features allows for maximum efficiency within shift hours. The best-in-class professional bar code and front and rear camera allow excellent data capture in the workplace. In addition, the sensor area at the top of the device supports NFC/RFID for card readers.

Additional accessories such as active in-vehicle, single-unit , multi-unit and battery pack charging cradle solutions allows use in multiple working environments.



▶ High Performance Display/Touch

5" IPS Panel with HD resolution
Capacitive multi-touch, optical bonding
and glove support



▶ Handy Rugged Design

IP67, 1.2M standard or
1.5M drop resistant with
protective cap providing
complete durability



▶ Smartphone Features

LTE and voice*





Specifications

A505 WIFI

A545 LTE

Display	5" (1280x720) HD wide view angle IPS panel, 450 nits	
Touch Panel	Optical bonding, glove support and waterproof	
Platform	Qualcomm Quad Core 1.3Hz	
OS	Android 6.0	
Memory	2GB/16GB	
Expansion	MicroSD up to 128GB	
Wireless Interface	Wifi 802.11a/b/g/n (2.4/5GHz)	
	N/A	GPS (support AGPS+GLONASS+BDS simultaneously)
	N/A	LTE - GSM 850/900/1800/1900 band, UMTS 850/900 1900/2100 band FDD LTE (EU) 2100/1800/2600/800 band
	Bluetooth 4.1 BLE	
NFC	RFID: ISO14443A&B, ISO15693	
	NFC: MiFare, Felica, Calypso and HF RFID tag.	
	Sensor area on front side top of device	
Physical Interface	MicroSD slot	
	3.5mm jack: Supports headphone + mic / Supports dongle payment module	
	Pogo pin connector (9 pin), support charging and USB (host/client) function	
	Built-in mic x2, supports noise cancellation	
	Built-in speaker x1	
	N/A	Receiver for voice call
Battery	4110mAh & 58mAh back up battery, supports hot swappable	
	Battery life 10 hours +	
Environment	IP67 and 1.2m drop resistant	
	-20-+60° operating temperature	
	-30-+70° storage temperature	
	Humidity: 0-95%, Non-Condense	
Sensors	Accelerometer (G sensor)	
	Ambient light sensor	
	Proximity Sensor	
	Vibrator	
BCR	Integrated 1D/2D imager	
Camera	Rear: 8MP AF w/flash LED, front: 2MP	
Certification	CE/CB IP67	
Warranty	12 months (extended warranty available)	
Weight	270g	
Dimensions	80mm(w), 16.8mm(H), 161mm(L)	

Available accessories:
Accessories available in separate document.

*Available on A545 only



ACCESSORIES GUIDE

Accessories for A500 Series

CHARGING ACCESSORIES



▶ POWER ADAPTOR AND CHARGING CABLE

Power adaptor:
5V/2A, with USB type A receptacle wall mount plug (UK/EU)

Charging Cable:
Connected with pogo pins, 1.3m cable, USB Type A
• *Included with device*



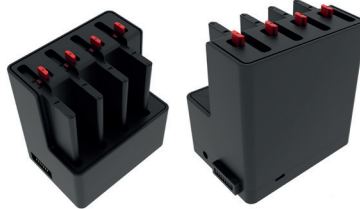
▶ SINGLE / MULTI UNIT CRADLE

7 pin connector, MicroUSB (charging), DC-in, USB 2.0 (host)
Combine single-unit cradles up to a 10 slot multi-cradle and charge simultaneously

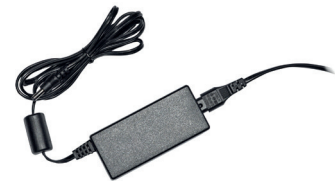
- **Single-unit cradle charging requirements:** 10W power adaptor included with single-unit cradle
- **Multi-unit cradle charging requirements:** 120W power adaptor. Sold separately.

▶ 4 SLOT BATTERY CHARGER

7 pin connector, MicroUSB (charging), DC-in and LED indicator



- **Single battery charging requirements:** 10W power adaptor included with battery cradle
- **Multi-battery charging requirements:** 120W power adaptor. Not available with cradle purchase. Available for purchase separately.



▶ 120W CRADLE ADAPTER

Required for:

- *Charging multiple single-unit cradles simultaneously*
- *Charging multiple batteries simultaneously in 5-slot battery charger*
- *Sold separately*

▶ SINGLE-UNIT CRADLE + 4 SLOT BATTERY CHARGER

Combine single unit cradle with battery charger and charge simultaneously

- *Single-unit cradle and battery charger Sold separately*
- **Charging requirements:** 120W Cradle Charger. *old separately.*



MITAC INTERNATIONAL CORP.

Website : miowork.mio.com
 Technical information e-mail: enterprise@mio.com
 Press and Marketing information e-mail: press.miowork@mio.com
 Address: MITAC Europe, Spectrum House,
 Beehive Ring Road, Gatwick, West Sussex RH6 0LG

ACCESSORIES GUIDE

Accessories for A500 Series



GENERAL ACCESSORIES



▶ PROTECTIVE CASING

Enhance drop resistance from 1.2m to 1.5m
• Sold separately



▶ VEHICLE ACCESSORIES

AMPS hole pattern, RAM mount compatible
• Sold separately



▶ HANDSTRAP

Detachable hand strap
• Sold separately



▶ PISTOL GRIP

BCR Trigger
• Available to purchase on demand only